



AESTHETIC LINE



The product does not exert its effect through pharmacological, immunological, or metabolic means.

Internal Circulation Document





ADVANCED SKINCARE & HAIRCARE SOLUTIONS

Based on scientific research
Recommended by Dermatologists
Natural origin

Live'em products are manufactured in modern facilities that meet GMP, ISO 13485, and ISO 9001 standards in Europe, Australia, and Canada. With strict quality control from raw materials to finished products, Live'em is committed to delivering the safest and most effective products for consumers.

At Live'em, we believe in transforming skincare and haircare with cutting-edge formulas designed for real results. Whether you need professional-grade dermatological treatments, scar therapy, or premium hair care, we have the solution for you.

TABLE OF CONTENT

Professional Therapy

1. LIVE'EM DERMA+ SOOTHING.....	7
2. LIVE'EM SKINCELL-RENEW THERAPY.....	8
3. LIVE'EM DERMA+ ANTISPOT.....	9
4. LIVE'EM DERMA+ LIGHTENING.....	10
5. LIVE'EM DERMA+ BALANCING.....	11
6. LIVE'EM ULTIMATE SUNDEFENSE FACE CREAM SPF 50.....	12
7. LIVE'EM LUMIGLOW CLEANSING GEL.....	13
8. LIVE'EM ULTIMATE WHITEGLOW COMPLEX.....	14
9. SKIN CARE ROUTINE AFTER PROFESSIONAL THERAPY	15

Scar Removal & Stretch Away

1. LIVE'EM KELO-H PROTHERAPY.....	17
2. LIVE'EM C-SCAR REMOVAL.....	18
3. LIVE'EM STRETCH AWAY & PRENATALE CREAM.....	19
4. LIVE'EM STRETCH AWAY & PRENATALE OIL.....	20
5. LIVE'EM STRETCH AWAY & PRENATALE GEL.....	21
6. SCAR PREVENTION CYCLE AFTER COSMETIC TREATMENTS, SKIN PEELS.....	22
7. COMBINATION OF STRETCH MARK TREATMENT PRODUCTS FOR OPTIMAL RESULTS.....	23

After Isotretinoin Treatment

1. LIVE'EM ISOCALM FACE CURE.....	25
2. LIVE'EM ISOCALM BODY CURE.....	25
3. LIVE'EM ISOCALM LIP CURE.....	26
4. LIVE'EM ISOCALM CLEANSING CURE.....	26
5. THE PERFECT SKIN CARE ROUTINE AFTER ISOTRETINOIN TREATMENT.....	27

TABLE OF CONTENT

Psoriasis Care

1. LIVE'EM PSORI-DERMATITIS THERAPY.....	29
2. LIVE'EM PSORI-DERMATITIS FILM FORMING.....	30
3. LIVE'EM PSORICARE HAIR & SCALP FOAM SOOTHING.....	31
4. PSORIASIS FACIAL & BODY CARE ROUTINE.....	32
5. SCALP PSORIASIS CARE ROUTINE.....	33

Hair & Scalp Treatment

1. LIVE'EM DERMA+ SOOTHING SCALP.....	35
2. LIVE'EM RADICALM HAIR SPRAY.....	35
3. LIVE'EM MEN REVITACARE HAIR SHAMPOO.....	36
4. LIVE'EM WOMEN REVITACARE HAIR SHAMPOO.....	36
5. LIVE'EM MEN REVITACARE HAIR LOTION.....	37
6. LIVE'EM WOMEN REVITACARE HAIR LOTION.....	37
7. LIVE'EM RADICALM SCALP FILM FORMING.....	38
8. HAIR & SCALP CARE REGIMEN FOR THINNING HAIR & PREVENT HAIR LOSS.....	39
9. HAIR & SKIN CARE AFTER TRANSPLANT.....	40
10. SENSITIVE SCALP CARE.....	41

Melasma & Darkening Treatment

1. LIVE'EM GLOW FACE RADIANT.....	43
2. LIVE'EM GLOW NIGHT REPAIR.....	44
3. LIVE'EM GLOW FACE LIGHTENING.....	45
4. LIVE'EM LUMI NIGHT REPAIR.....	46
5. SKINCARE ROUTINE.....	47

AESTHETIC LINE PROFESSIONAL THERAPY

EXTRACTED FROM GENTLE NATURAL INGREDIENTS

The product does not exert its effect
through pharmacological, immunological,
or metabolic means.



Live'em DERMA⁺ SOOTHING

**QUICKLY DISSOLVES BRUISES,
FADES DARK SPOTS**

- ✓ Quickly dissolves bruises after skin aesthetic treatments such as thread lifting, wrinkle removal,...
- ✓ Fades and quickly eliminates dark spots, evens out skin tone
- ✓ Soothes red, irritated, painful, itchy and tight skin, restores skin



HOW TO USE

Apply a thin layer to the area of skin that needs care, gently massage until completely absorbed

Live'em SKINCell-Renew Therapy

**PROMOTES SKIN
REGENERATION, PREVENTS
SCARS**

- ✓ Soothes the skin
- ✓ Restores and regenerates skin cells

Perfect for use after invasive cosmetic treatments, such as Lasers and Peels.....



HOW TO USE

Apply at least twice daily to the affected area for a minimum of 8-10 days following the aesthetic procedure. Use in combination with Live'em Ultimate SunDefense SPF 50 to protect newly treated skin.

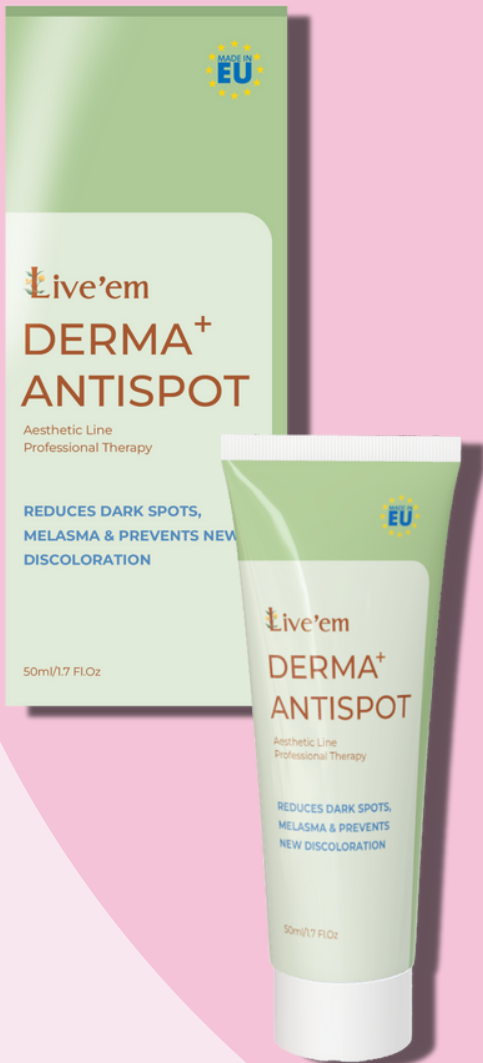


Live'em DERMA⁺ ANTISPOT

BRIGHTENS SKIN, FADES PIGMENTATION

- ✓ Quickly fades dark spots, freckles, etc., brightens and evens skin tone
- ✓ Inhibits the formation of skin pigmentation, prevents new pigmentation from appearing after the age of 25.
- ✓ Moisturizes and soothes sensitive skin

Perfect for daily use before and after cosmetic treatments for melasma and age spots such as Laser, Mesotherapy...



HOW TO USE

Apply to dark spots, massage gently, and combine with DERMA+ LIGHTENING for optimal results.



**See detailed skin care routine instructions on page 15*



Live'em DERMA⁺ LIGHTENING

BRIGHTENS SKIN, FADES PIGMENTATION

- ✓ Inhibits the formation of skin pigmentation, prevents the appearance of new melasma, dark circles, dark spots appearing after the age of 25 or after cosmetic treatments for melasma, age spots such as Laser, Mesotherapy,...
- ✓ Restores damage, reduces peeling, irritation,... after cosmetic treatments.

HOW TO USE



Apply evenly to clean skin, gently massage, use every morning and evening, combine with sunscreen during the day to protect the skin and combine with Live'em DERMA+ ANTISPOT for optimal results.

Live'em DERMA⁺ BALANCING

MOISTURIZE & BALANCE SKIN

- ✓ Reduces swelling, itching and tightness, cools irritated skin before and after cosmetic treatments
- ✓ Use daily to maintain long-term moisture and skin balance.
- ✓ Use before other skin care products or treatments to hydrate, balance pH, and optimize nutrient absorption



HOW TO USE

Apply evenly to skin, massage gently until completely absorbed into skin before using next products.

Live'em

Ultimate SunDefense Face Cream

SPF 50



SUPERIOR SUN PROTECTION RADIANT SKIN

- ✓ Protects the skin of the face and neck from the harmful effects of UVA and UVB rays
- ✓ Prevents the formation of wrinkles, melasma, and dark spots
- ✓ Moisturizes the skin, smooths the skin, and protects for many hours
- ✓ Suitable for all skin types



HOW TO USE

Apply 20 minutes before sun exposure.

Repeat every 2 hours when outdoors, after swimming, sweating or wiping face.

Repeat every 3-4 hours if exposed to blue light or sunlight through glass windows indoors/in the office.



Live'em LumiGlow Cleansing Gel

GENTLE CLEANSING FOR ALL
SKIN TYPES

- ✓ Gently cleanses, nourishes and hydrates the face
- ✓ Cleanses the skin before using aesthetic treatments and skin treatments

HOW TO USE

Wet face. Apply evenly and massage gently, then rinse. Use regularly morning and evening or as needed.

Use to cleanse skin before invasive and non-invasive cosmetic and skin treatments.

Live'em Ultimate WhiteGlow Complex

BRIGHT, PURE SKIN NO
WORRIES ABOUT MELASMA

- ✓ Inhibits melanin formation, deeply brightens and reduces pigmentation
- ✓ Limits the formation of melasma and age spots
- ✓ Suitable for use after laser melasma removal therapy to avoid the formation of new melasma.



HOW TO USE

Apply a thin layer to clean skin, focusing on areas with dark spots or pigmentation. Combine with Live'em Ultimate SunDefense SPF 50 for optimal skin protection.

1

CLEANSE



Use **Live'em LumiGlow Cleansing Gel** to remove dirt & impurities.

2

BALANCE & PREP



Use **Live'em DERMA⁺ BALANCING** to balance the skin and optimize the absorption of nutrients.

3

TARGET & CORRECT



After treatment, use **Live'em SKINCell-Renew Therapy** to promote skin regeneration.

SKIN CARE ROUTINE AFTER PROFESSIONAL THERAPY

4

HYDRATE & SOOTHE



Follow with **Live'em DERMA SOOTHING** to hydrate & soothe sensitive skin.

5

REGENERATE & HEAL



Apply **Live'em DERMA ANTISPOT** combined with **Live'em DERMA LIGHTENING** to lighten dark spots & even out skin tone.

6

PROTECT



Use **Live'em Ultimate SunDefense SPF 50** to protect skin all day long from harmful UV rays.

AESTHETIC LINE

SCAR REMOVAL & STRETCH AWAY

FADE SCARS – RESTORE CONFIDENCE – SHINE BRIGHTLY

The product does not exert its effect through pharmacological, immunological, or metabolic means.



Live'em KELO-H PROTHERAPY

COMPREHENSIVE SCAR TREATMENT SOLUTION

- ✓ Special Silicone Gel creates a membrane, controls collagen proliferation, flattens keloid scars, hypertrophic scars, acne scars, both new and old scars
- ✓ Accelerates the healing process, fades scars, prevents scarring after trauma, acne, burns and surgery
- ✓ Does not contain corticosteroids, safe for long-term use



Apply twice daily to the treated area after injury, scarring, or acne-prone skin that has been cleansed. Use **Live'em DERMA SOOTHING** and **Live'em DERMA LIGHTENING** to help brighten and even out skin tone.



Live'em C-SCAR REMOVAL

SPECIALIZED FOR CESECTION SCARS

✓ Specialized in treating scars,
especially scars after cesarean
section surgery

HOW TO USE

Apply to clean and dry skin area to be treated. Use
2-3 times daily.

Live'em STRETCH AWAY & PRENATALE CREAM

PREVENTS STRETCH MARKS AND SCARS



- ✓ Fades stretch marks, prevents stretch marks for pregnant women or people with weight changes
- ✓ Fades scars, including new and old scars.
- ✓ Prevents and fades stretch marks formed when using cosmetic treatments to change measurements such as liposuction of the abdomen, thighs, etc.
- ✓ Deeply moisturizes, softens, firms, and evens skin tone.



Apply twice daily after bathing. Combine with **Live'em Stretch Away & Prenatale Oil** at night for best results.

Live'em STRETCH AWAY & PRENATALE GEL

PREVENTS STRETCH MARKS AND SCARS



- ✓ Fades stretch marks, prevents stretch marks for pregnant women or people with weight changes
- ✓ Fades scars, including new and old scars.
- ✓ Prevents and fades stretch marks formed when using cosmetic treatments to change measurements such as liposuction of the abdomen, thighs,...
- ✓ Deeply moisturizes, softens, firms, and evens skin tone.



Apply twice daily after bathing. Combine with **Live'em Stretch Away & Prenatale Oil** at night for best results.



**See detailed skin care routine instructions on page 22,23*



Live'em STRETCH AWAY & PRENATALE OIL

PREVENTS STRETCH MARKS AND SCARS

- ✓ Fades stretch marks, prevents stretch marks for pregnant women or people with weight changes
- ✓ Fades scars, including new and old scars.
- ✓ Prevents and fades stretch marks formed when using cosmetic treatments to change measurements such as liposuction of the abdomen, thighs,...
- ✓ Deeply moisturizes, softens, firms, and evens skin tone.

HOW TO USE

Gently massage onto stretch mark prone areas twice daily, especially before bedtime for optimal results.

SCAR PREVENTION CYCLE AFTER COSMETIC TREATMENTS, SKIN PEELS

SCAR TREATMENT



Use Live'em Kelo-H ProTherapy to fade scars and prevent new scars from forming

EVEN SKIN TONE



Combining Live'em DERMA+ SOOTHING quickly fades bruises caused by injuries, dark spots left by acne, and evens skin tone.



Combining Live'em DERMA+ LIGHTENING effectively brightens, supports even skin tone, and brightens skin areas.



OILY SKIN

DAY



Live'em

STRETCH AWAY & PRENATALE CREAM



NIGHT



Live'em

STRETCH AWAY & PRENATALE OIL

COMBINATION OF STRETCH MARK TREATMENT
PRODUCTS FOR OPTIMAL RESULTS

DRY SKIN

DAY



Live'em

STRETCH AWAY & PRENATALE GEL



NIGHT



Live'em

STRETCH AWAY & PRENATALE OIL

AESTHETIC LINE

AFTER ISOTRETINOIN TREATMENT

EFFECTIVELY CONTROLS SKIN SIDE EFFECTS AFTER ISOTRETINOIN USE

The product does not exert its effect through pharmacological, immunological, or metabolic means.



Live'em

ISOCALM FACE CURE



INTENSIVE FACIAL RECOVERY

- ✓ Repairs damaged, irritated skin during and after acne treatments, especially after using Isotretinoin
- ✓ Deeply moisturizes, restores dry, flaky, cracked, tight skin
- ✓ Soothes irritation, redness, itching and dermatitis

HOW TO USE

Apply 2-3 times a day to cleansed face with Live'em IsoCalm Cleansing Cure. Gently massage until the product is completely absorbed

Live'em ISOCALM BODY CURE

MOISTURIZES AND SOOTHES THE WHOLE BODY

- ✓ Relieves skin damage and irritation during and after acne treatments, especially after using Isotretinoin
- ✓ Deeply moisturizes, restores dry, flaky, cracked, and tight skin
- ✓ Soothes irritation, redness, itching, and dermatitis

HOW TO USE:

Apply 2-3 times a day to cleansed skin. Gently massage until fully absorbed

**See detailed skin care routine instructions on page 27*



Live'em ISOCALM LIP CURE

SOOTHES, RESTORES & PROTECTS LIPS



- ✓ Reduces dryness, cracking, bleeding, pain and burning of the lips
- ✓ Soothes cheilitis caused by using Isotretinoin treatments to treat acne and pimples.

HOW TO USE

Cleanse lips, then apply a thin layer of the product to the lips. Can apply a thick layer at night to deeply moisturize and restore lips.

Live'em ISOCALM CLEANSING CURE

GENTLE DAILY CLEANSER

- ✓ Gently cleanses sensitive, irritated, damaged skin after intensive acne treatment, especially when using Isotretinoin therapy.
- ✓ Maintains pH balance and natural skin barrier

HOW TO USE

Wet face. Apply evenly and massage gently, then rinse with warm water, let dry.

Use morning and evening



**See detailed skin care routine instructions on page 27*

1



Cleansing:
Start with **Live'em IsoCalm Cleansing Cure**

2



Facial Care:
Apply **Live'em IsoCalm Face Cure** to restore and hydrate

3



Body Care:
Use **Live'em IsoCalm Body Cure** to Moisturize Your Whole Body

5



Protection:
Shield your skin from harmful UV rays with **Live'em Ultimate SunDefense SPF 50**

THE PERFECT SKINCARE ROUTINE AFTER

ISOTRETINOIN TREATMENT

4



Lip Care:
Use **Live'em IsoCalm Lip Cure** several times a day

AESTHETIC LINE PSORIASIS CARE

PSORIASIS TREATMENT SUPPORT

The product does not exert its effect through pharmacological, immunological, or metabolic means.

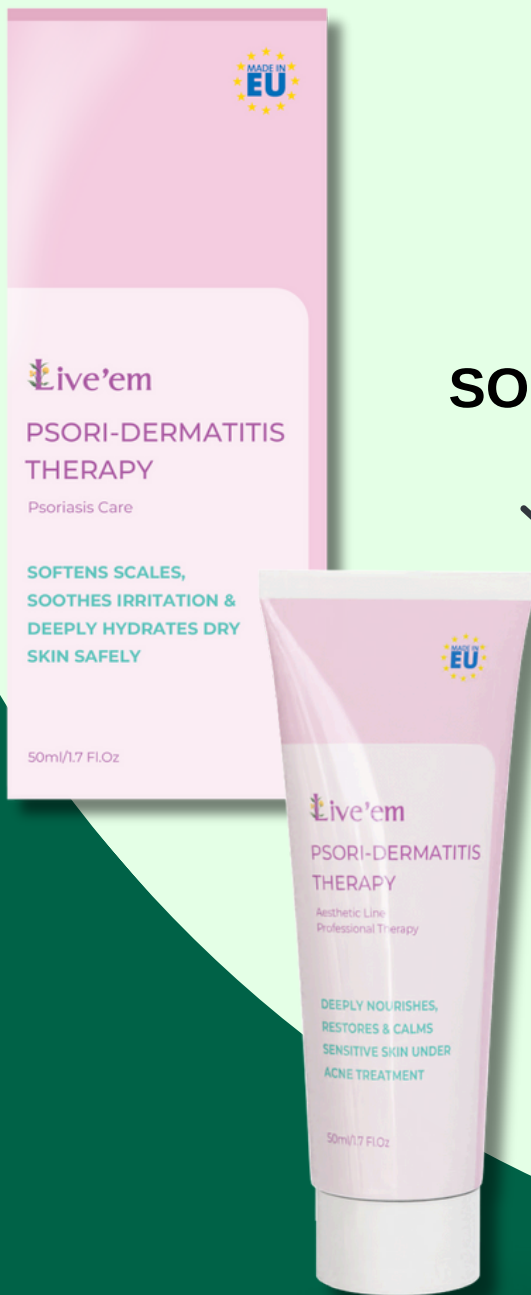


Live'em PSORI-DERMATITIS THERAPY

SOFT & SOOTH DAMAGED SKIN

- ✓ Reduces epidermal symptoms of psoriasis
- ✓ Softens and removes scales, reduces itching and redness
- ✓ Deeply moisturizes, soothes inflamed, irritated skin
- ✓ Steroid-free, safe for long-term use

Ideal for people with psoriasis, eczema, dermatitis with symptoms of dryness, itching, and keratosis.



HOW TO USE

Apply 3-4 times daily to the clean skin area to be treated. Do not wash the applied area for 2-3 hours. Can be used in combination with gauze to enhance the absorption effect.

LIVE'EM PSORI-DERMATITIS FILM FORMING

SOFTEN, REDUCE SCALE, SOOTH ITCHING



- ✓ Reduces epidermal symptoms of psoriasis
- ✓ Softens skin and scales caused by psoriasis
- ✓ Reduces itching, redness, irritation, deeply moisturizes
- ✓ Protects and restores damaged skin
- ✓ Steroid-free, safe for long-term use

Perfect for skin (face, body, oily skin) with psoriasis, widespread.

HOW TO USE

Shake well, spray onto cleansed skin up to 3 times daily, allow to dry naturally.

Avoid rubbing to avoid further irritation

Live'em PSORICARE HAIR & SCALP FOAM SOOTHING

CLEANSE, REDUCE FLAKES, SOOTH ITCHY SCALP

- ✓ Reduces scalp symptoms associated with psoriasis such as flaking, itching, redness and irritation
- ✓ Gently cleanses, removes flakes on the scalp
- ✓ Reduces itching, redness and irritation caused by psoriasis
- ✓ Moisturizes, softens and protects sensitive scalp

Perfect for use in psoriasis and scalp dermatitis care and treatment regimens

HOW TO USE

Wet hair and scalp, take 5-10ml to create foam, gently massage for 2-3 minutes, then rinse.

Use 2-3 times a week for best results



PSORIASIS FACIAL & BODY CARE ROUTINE



TREATMENT

Apply **Live'em Psori-Dermatitis Therapy** to cleansed skin 3-4 times daily.

SOOTHING

Live'em Psori-Dermatitis Film Forming Day Spray soothes, protects and is convenient for everyday activities



PROTECTION, SUN PROTECTION



Always use **Live'em Ultimate SunDefense SPF 50** to protect your skin all day long from harmful UV rays.

SCALP PSORIASIS CARE ROUTINE

CLEANSE



Use **Live'em PsoriCare Hair & Scalp Foam Soothing** to gently cleanse the scalp

SOOTHING



Live'em Psori-Dermatitis Film Forming Daytime Spray helps soothe the scalp, effectively protecting

AESTHETIC LINE HAIR & SCALP TREATMENT

NOURISHES & CARES FOR HEALTHY AND BEAUTIFUL HAIR

The product does not exert its effect through pharmacological, immunological, or metabolic means.



Live'em

DERMA⁺ SOOTHING SCALP

SCALP RESTORATION - HAIR GROWTH
STIMULATION

- ✓ Regenerate, restore hair follicles, stimulate hair growth and new hair growth after hair transplant techniques, PRP, micro-needling, scalp transplantation
- ✓ Strengthen hair follicles, increase hair root strength, reduce hair loss
- ✓ Soothe sensitive scalp, reduce redness, inflammation and irritation

HOW TO USE

Spray on the skin area to be treated, gently massage until the product is absorbed.

Do not cover the skin to expose it to air. Repeat the process daily.



Live'em

RadiCalm Hair Spray

RESTORES DAMAGED HAIR & SCALP

- ✓ Restores damaged hair and scalp due to cancer treatment, after hair treatments and cosmetic treatments,...
- ✓ Enhances hair growth, supports hair growth to help hair grow thick, strong, and prevents hair loss due to scalp damage.
- ✓ Soothes itchy, red, and irritated scalp, reduces discomfort, and relaxes the scalp.

HOW TO USE

Spray the product onto clean, dry hair, massage gently to ensure complete absorption. Use daily, preferably at night. Do not rinse with water. Avoid contact with eyes.



**See detailed skin care routine instructions on page 39 - 41*

Live'em

WOMEN REVITACARE HAIR SHAMPOO

HAIR CARE, PREVENT HAIR LOSS

- ✓ Cleanse the scalp, promote blood microcirculation, nourish the scalp, make hair strong
- ✓ Rich in natural extracts and antioxidants to help prevent hair follicle aging, reduce hair loss, prolong the hair life cycle

HOW TO USE

Apply evenly to wet hair and massage gently, then rinse. Combine with Live'em Women RevitaCare Hair Lotion for optimal results.



Live'em MEN REVITACARE HAIR SHAMPOO

CARE, RESTORE, PREVENT HAIR LOSS

- ✓ Cleanses the scalp, promotes blood microcirculation, nourishes the scalp, and strengthens hair
- ✓ Rich in natural extracts and antioxidants to help prevent hair follicle aging, reduce hair loss, and prolong the hair life cycle

HOW TO USE

Apply evenly to wet hair and massage gently, then rinse thoroughly. Combine with Live'em Men RevitaCare Hair Lotion for optimal results.



*See detailed skin care routine instructions on page 39 - 41

Live'em WOMEN REVITACARE HAIR LOTION



HAIR CARE, HAIR LOSS PREVENTION

- ✓ Moisturizes and controls excess oil on the scalp
- ✓ Rich in natural extracts and antioxidants to help prevent hair follicle aging, reduce hair loss due to hormonal changes
- ✓ Promotes blood circulation, nourishes and protects hair from root to tip

HOW TO USE

Apply to hair and massage gently, no need to rinse. Suitable for styling and daily use. Combine with **Live'em Women RevitaCare Hair Shampoo** for optimal results.

LIVE'EM MEN REVITACARE HAIR LOTION

HAIR CARE, HAIR LOSS PREVENTION

- ✓ Moisturizes and controls excess oil on the scalp
- ✓ Rich in natural extracts and antioxidants to help prevent hair follicle aging, reduce hair loss due to hormonal changes
- ✓ Promotes blood circulation, nourishes and protects hair from root to tip

HOW TO USE

Apply to hair and massage gently, no need to rinse. Suitable for styling and daily use.

Combine with **Live'em Men RevitaCare Hair Shampoo** for optimal results

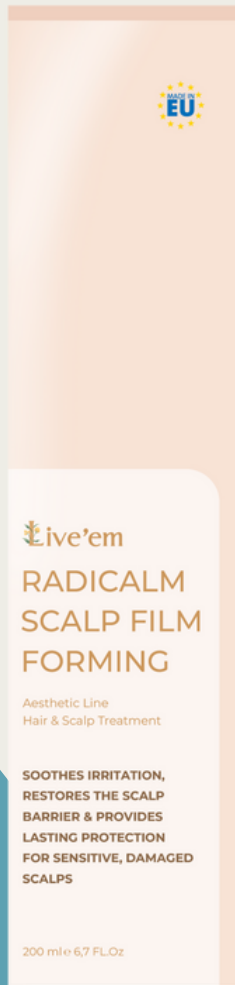


**See detailed skin care routine instructions on page 39 - 41*

LIVE'EM RADICALM SCALP FILM FORMING

SOOTHE & RESTORE DAMAGED SCALP

- ✓ Soothes irritated, damaged, red, itchy scalp in people with sensitive scalp, people who have used cosmetic treatments, dyed, curled, straightened,... people who have undergone radiation therapy, chemotherapy or other ion methods...
- ✓ Restores the scalp's protective barrier, reduces damage and inflammation of the scalp



HOW TO USE

Apply to dry hair, massage gently and leave on, no need to rinse.



HAIR & SCALP CARE REGIMEN

FOR THINNING HAIR & PREVENT HAIR LOSS



1

DAILY CLEANSING

Use Live'em Women/Men RevitaCare Hair Shampoo to cleanse and strengthen hair.

2

HAIR CARE

Apply Live'em Women/Men RevitaCare Hair Lotion to hydrate and support hair follicle health.



HAIR & SCALP CARE REGIMEN

HAIR & SKIN CARE AFTER TRANSPLANT

1

GENTLY CLEANSE

Use Live'em Women/Men RevitaCare Hair Shampoo to gently cleanse the scalp



2

INTENSIVE SCALP REPAIR

Use Live'em DERMA⁺ SOOTHING
SCALP for intensive repair



3

LONG-LASTING NOURISHMENT

Use Live'em RadiCalm Hair Spray and Live'em Women/Men RevitaCare Hair Lotion for long-lasting nourishment and reduced hair loss.



HAIR & SCALP CARE REGIMEN

SENSITIVE SCALP CARE



1

DAY

Use Live'em RadiCalm Hair Spray to restore sensitive hair and scalp.

2

NIGHT

Apply Live'em RadiCalm Scalp Film Forming to restore hair and scalp



AESTHETIC LINE

MELASMA & DARKENING TREATMENT

BRIGHTENING, ANTI-PIGMENTATION & COMPLETE SKIN RECOVERY SOLUTION – DAY & NIGHT CARE

The product does not exert its effect through pharmacological, immunological, or metabolic means.



Live'em GLOW FACE RADIANT

**PIGMENTATION REDUCTION,
BRIGHTENING, SPF 15 SUN PROTECTION**

- ✓ Inhibits melanin production, fades dark spots and pigmentation
- ✓ Daytime skincare specialist
- ✓ Protects skin from UV rays with SPF 15

DIRECTIONS FOR USE:

Apply Live'em Glow Face Radiant to clean, dry skin twice daily.

For external use only. Do not apply on open wounds.



Live'em GLOW NIGHT REPAIR

**PIGMENTATION FADING – EVEN SKIN
TONE – NIGHTTIME REPAIR**

- ✓ Fades dark spots and pigmentation, prevents discoloration and uneven skin tone
- ✓ Specially formulated for nighttime skincare

DIRECTIONS FOR USE:

Apply Live'em Glow Night Repair to clean, dry skin before bedtime.

For external use only. Do not apply on open wounds.



See the detailed skincare routine guide on pages 46,47

Live'em GLOW FACE LIGHTENING

PIGMENTATION FADING – SKIN BRIGHTENING

- ✓ Inhibits melanin overproduction, brightens the skin
- ✓ Visibly reduces dark spots and pigmentation



- Apply **Live'em Glow Face Lightening** to clean, dry skin twice daily.
- For optimal results, use before **Live'em Glow Face Radiant**.
- For external use only. Do not apply on open wounds.



Live'em

LUMI NIGHT REPAIR

PIGMENTATION FADING – SKIN
BRIGHTENING – INTENSIVE NIGHT
REPAIR

- ✓ Specially formulated for nighttime care, helps inhibit melanin production and brighten the skin
- ✓ Visibly effective in reducing dark spots and hyperpigmentation



- Apply **Live'em Lumi Night Repair** to clean, dry skin before bedtime.
- For best results, use before **Live'em Glow Night Repair**.
- For external use only. Do not apply on open wounds

**See the detailed skincare routine guide on pages 46,47*

MORNING SKINCARE ROUTINE FOR PIGMENTED SKIN

1

CLEANSING

Cleanse your skin with **Live'em Lumiglow Cleansing Gel**



2

BRIGHTENING

Use **Live'em Glow Face Lightening** followed by **Live'em Glow Face Radiant Brightens** the skin and helps prevent melanin production.



3

PROTECTION AND DEFENSE AGAINST UV

Protect and shield with **Live'em Ultimate SunDefense SPF 50**



EVENING SKINCARE ROUTINE FOR PIGMENTED SKIN

CLEANSING



Cleanse your skin with **Live'em Lumiglow Cleansing Gel**

FADE DARK SPOTS AND PIGMENTATION

Follow with **Live'em Lumi Night Repair**



Then apply **Live'em Glow Night Repair** to fade pigmentation, prevent further dark spot formation, and support skin regeneration.



BACKED BY SCIENTIFIC RESEARCH

RECOMMENDED BY DERMATOLOGISTS

NATURALLY SOURCED

Live'em products are manufactured in state-of-the-art facilities that meet GMP, ISO 13485, and ISO 9001 standards across Europe, Australia, and Canada.

With a rigorous quality control process from raw materials to finished goods, Live'em is committed to providing safe and highly effective products for every user.

 Visit now: Liveem.com.au to learn more about Live'em!